

# Solar protection



[www.ferrari-architecture.com](http://www.ferrari-architecture.com)

**SOLTIS<sup>®</sup> 86**

**FERRARI**  
architecture



# SOLTIS® 86

## Micro-ventilated textiles for solar protection

Main applications: Facade blinds - Veranda  
and conservatory blinds - Shadesails

### Thermal protection and light management

Soltis® 86 is the perfect textile choice for essential solar protection combined with openness to let in more light.

Soltis® 86 makes a big contribution to building heating management by cutting out up to 86% of the sun's rays.

North-facing facades and conservatories needing greater amounts of light are situations where Soltis® 86 textiles really come into their own.



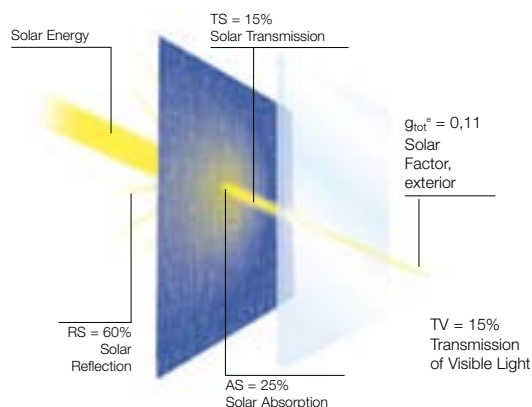
Reuter's Agency - Geneva - Switzerland

### LowE: high energy performance

The Soltis® 86 range has been further enriched by two new references featuring a specific Low Emissivity treatment (LowE = 0.45).

This treatment assists in increasing interior comfort in buildings by re-emitting less heat. Soltis® 86 LowE therefore forms a passive cooling source and contributes to improving a building's energy performance.

Example of values given for colour shade 86-2063E  
(according to EN 14501 with type "C"  
double glazing insulating materials)



### Transparency and visibility toward the outside

Soltis® 86 provides greater visibility toward the outside, plus much-appreciated visual comfort in many types of buildings.



Festo - Germany



Angers Railway Station - France



Private house - Belgium

### Metallic and matching colours

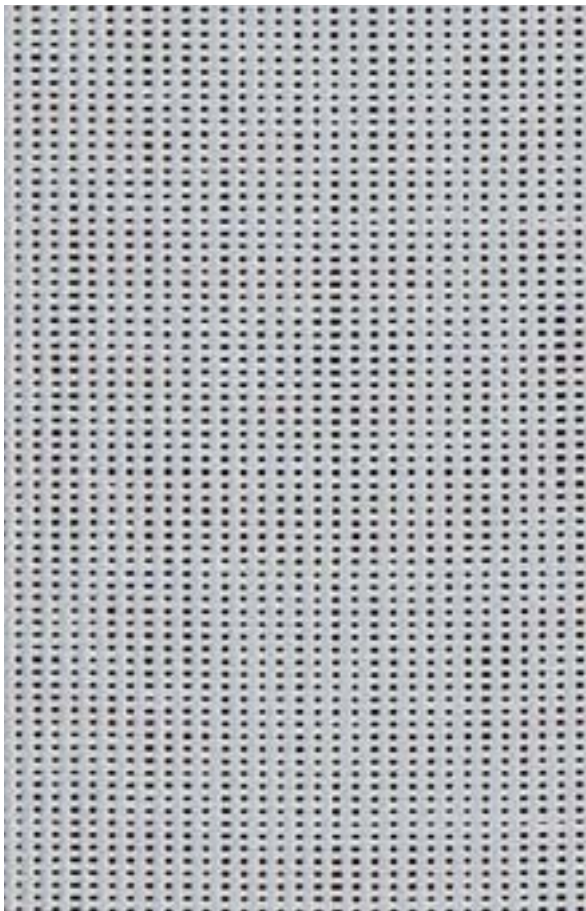
Soltis® 86 is a perfect complement to the Soltis® 92 and Soltis® 93 ranges. As most of the colours in the three ranges are matchable you can cover all the facades of a building while respecting each one's specific thermal and light protection requirements.

The innovative Soltis® 86 metallic finishes open up new horizons for blending solar protection textiles with the building and its surroundings.

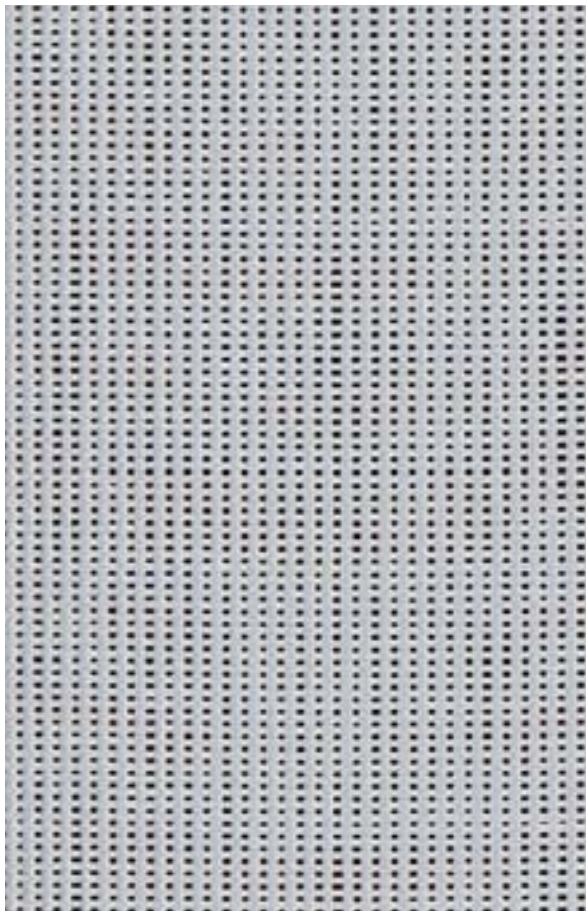
Aluminum, gold, copper and bronze are particularly well suited colours in modern architecture.



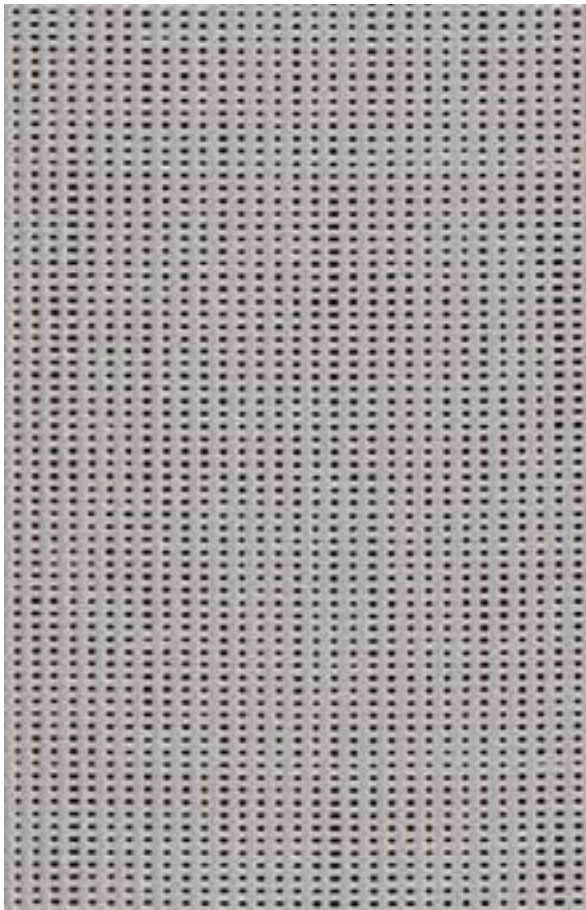
The colours and textures represented in this digital image are provided as a reference only. Whether seen on a screen or printed, they cannot in any way match the actual item. We recommend procuring an actual sample when specifying these products.



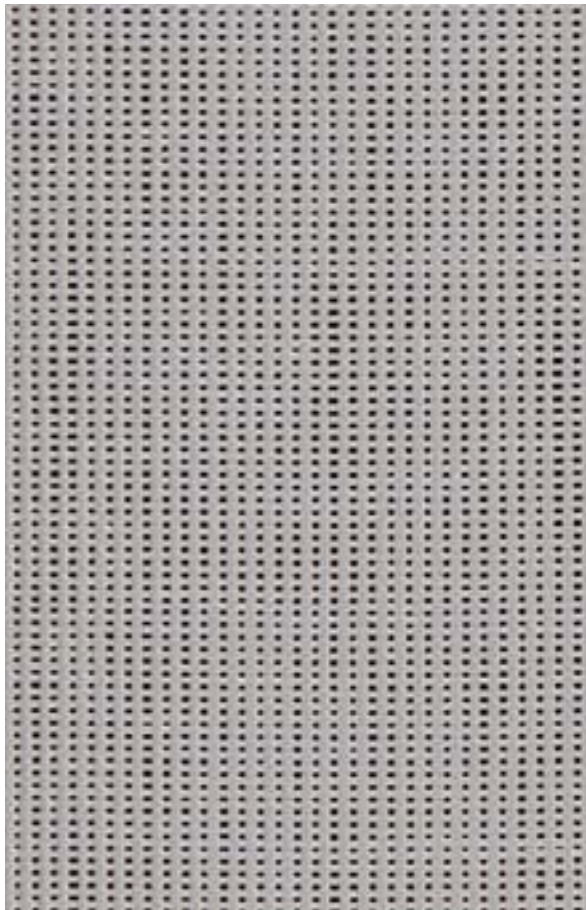
LowE 86-2061 E



LowE 86-2063 E



86-2048

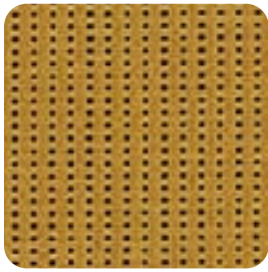


86-2046

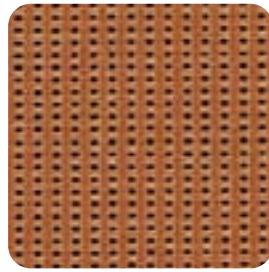
86-3046\*





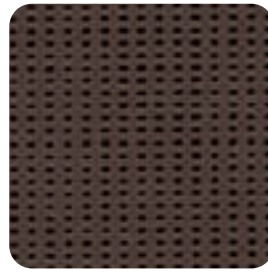


86-2078



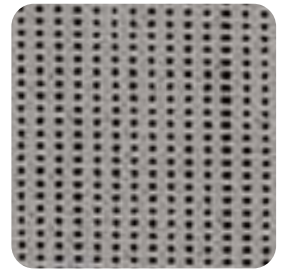
86-2077

86-3077\*



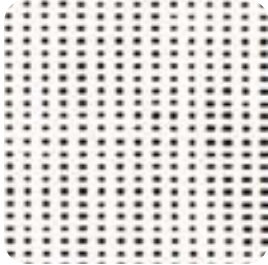
86-2043

86-3043\*



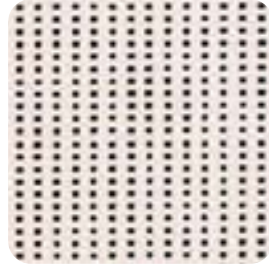
86-2045

86-3045\*



86-2044

86-3044\*

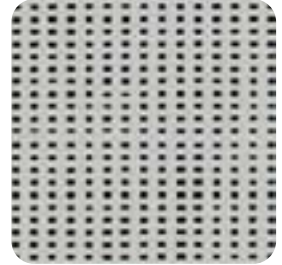


86-2001



86-2003

86-3003\*



86-2011

86-3011\*



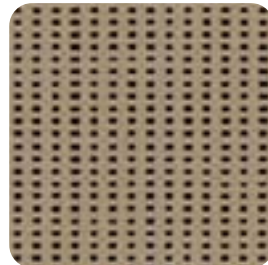
86-2175

86-3175\*



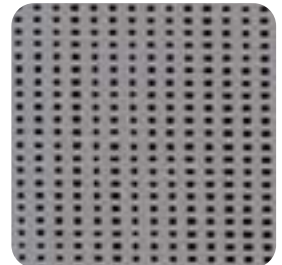
86-2002

86-3002\*



86-2012

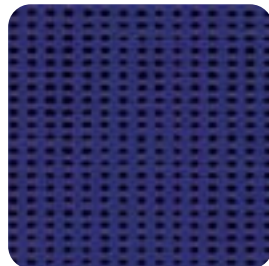
86-3012\*



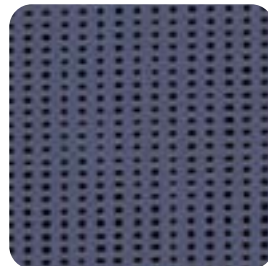
86-2069



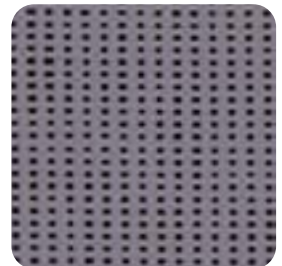
86-2006



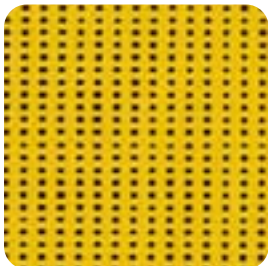
86-2030



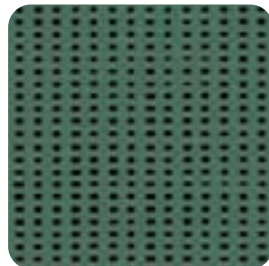
86-2040



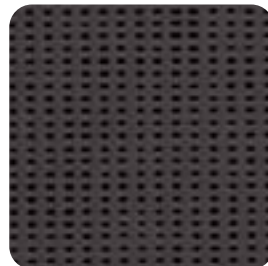
86-2022



86-2024



86-2035



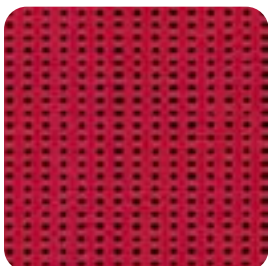
86-2047

86-3047\*

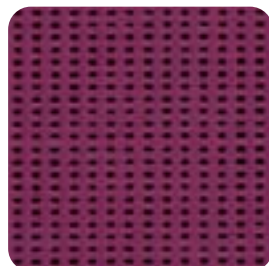


86-2053

86-3053\*



86-2027

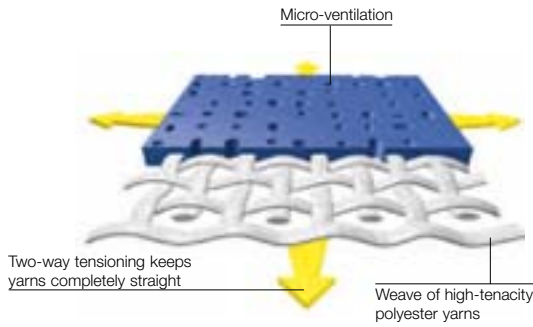


86-2042



\* = Roll-width is 267 cm  
All Soltis® 86 colours are also available in Soltis® 92.

# The exclusive **Précontraint® Ferrari®** technology



Made using the exclusive patented Précontraint® Ferrari® technology, Soltis® textiles are maintained under tension throughout the whole manufacturing cycle.

This gives very considerable dimensional stability. Textiles keep their shape, both during installation and when in use. Soltis® textiles combine strength, thinness and light weight.

## These textiles carry the "NF Toiles" label



The French NF Toiles label guarantees that solar protection textiles maintain a high level of quality and homogeneity. Soltis® certified textiles meet the NF label's thermo-optical, mechanical and longevity requirements.

## Solar and light properties (according to EN 14501)

Reference	TS	RS	AS	TV n-h	TV n-n	g <sub>tot</sub> <sup>o</sup>	g <sub>tot</sub> <sup>i</sup>	NCS Codification
86-2001	29	58	13	26	15	0.20	0.38	1003 R 05 B
86-2002 86-3002	26	47	27	22	12	0.18	0.42	2010 Y 30 R
86-2003 86-3003	21	45	34	19	15	0.16	0.42	2005 Y 50 R
86-2006	25	55	20	23	14	0.18	0.39	0030 Y 10 R
86-2011 86-3011	24	41	35	22	15	0.18	0.44	2502 B
86-2012 86-3012	19	27	54	18	15	0.16	0.48	4010 Y 30 R
86-2022	21	33	46	16	17	0.16	0.46	5010 R 70 B
86-2024	29	46	25	25	14	0.20	0.42	0765 Y 17 R
86-2027	28	37	35	18	17	0.21	0.45	1473 Y 95 R
86-2030	24	25	51	16	16	0.18	0.48	5050 R 70 B
86-2035	17	13	70	17	16	0.15	0.52	4837 B 77 G
86-2040	22	13	65	21	18	0.18	0.52	6020 R 90 B
86-2042	22	15	63	18	15	0.17	0.51	5040 R 20 B
86-2043 86-3043	12	10	78	11	13	0.12	0.53	7404 Y 51 R

Reference	TS	RS	AS	TV n-h	TV n-n	g <sub>tot</sub> <sup>o</sup>	g <sub>tot</sub> <sup>i</sup>	Codification NCS
86-2044 86-3044	32	59	9	30	14	0.21	0.38	0501 Y 17 R
86-2045 86-3045	14	29	57	14	13	0.12	0.47	/
A 86-2046 86-3046	21	43	36	20	14	0.16	0.43	/
B 86-2046 86-3046	19	58	23	19	14	0.14	0.38	/
86-2047 86-3047	16	7	77	16	15	0.14	0.54	/
86-2048	22	42	36	22	16	0.17	0.43	/
86-2053 86-3053	15	5	80	15	13	0.14	0.54	S 8500 N
A 86-2061 E	18	58	24	17	14	0.13	0.38	/
B 86-2061 E	18	61	21	17	14	0.13	0.37	/
86-2063 E	15	60	25	15	13	0.11	0.37	/
86-2069	15	22	63	15	14	0.13	0.49	S 4502 B
86-2077 86-3077	20	35	45	16	15	0.15	0.45	/
86-2078	20	35	45	17	17	0.15	0.45	/
86-2175 86-3175	28	57	15	26	14	0.19	0.39	/

TS: Solar Transmission as a %  
RS: Solar Reflection as a %  
AS: Solar Absorption as a %  
TS + RS + AS = 100% of the incident energy

TVn-h: Normal-hemispherical Light Transmission as a %  
TVn-n: Normal-normal Light Transmission as a %

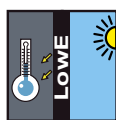
g<sub>tot</sub><sup>o</sup>: External solar factor  
g<sub>tot</sub><sup>i</sup>: Internal solar factor  
C type glazing: insulating, slightly emissive double glazing in position 3 (4 + 16 + 4; Argon filled).

A: Aluminum side exposed to the sun  
B: Colored side exposed to the sun

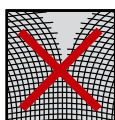
## **SOLTIS® 86** Technical features



Visibility toward the outside



Low Emissivity



Tear resistance



Won't sag



Fungistatic treatment



Space-saving



Long life



Easy maintenance



Flame retardant



100% recyclable textile



Safety textile

# Solar protection

## SOLTIS® 86

Technical properties	Soltis® 86	Standards
Weight	380 g/sqm	EN ISO 2286-2
Thickness	0,43 mm	
Roll-width New roll-width	177 cm 267 cm	
Tensile strength (warp/weft)	230/160 daN / 5 cm	EN ISO 1421
Tear resistance (warp/weft)	45/20 daN	DIN 53.363
Flame retardancy	<b>M1/NFP 92-507 • METHOD 1/NFPA 701 • CSFM T19 • Class A/ASTM E84 B1/DIN 4102-1 • BS 7837 • BS 5867 • B1/ONORM A 3800-1 CLASSE 1/UNI 9177 • M1/UNE 23.727 • VKF 5.2/SN 198898 AS/NZS 1530.3 • G1/GOST 30244-94 B-s2,d0/EN 13501-1</b>	
Euroclass		
Roll lengths: 177 cm wide 267 cm wide	50 lm 40 lm	
Fungistatic treatment	Degree 0, excellent	EN ISO 846-A
Quality management system	ISO 9001	

The technical data shown here are average values, given for information only, and may be modified.

### www.soltis-textiles.com

Downloading, technical data, references, photos, description of tenders, and much more. All in real time.



### Sustainable development

Ferrari® development is based on strict adherence to good safety and environmental practices. This includes an understanding of Life Cycle Analysis (LCA), selection of the best materials, and eco-design. The Company obtained its first ISO 14001 certification in 2003.

### 100% recyclable

Ferrari® developed the Taxyloop® technology specifically for the recycling of composite PVC membranes and textiles. Through the management of its end-of-life products Ferrari® is committed to sustainable development.  
www.taxyloop.com

### Specification Service

The Ferrari® specification service is available to inform you, advise you and suggest innovative solutions for your specific requirements.

To detail your project, fill in a form under:  
www.soltis-textiles.com

## FERRARI



#### EUROPE

FERRARI SA  
La Tour du Pin - FRANCE  
Tel: +33 (0)4 74 97 41 33  
Fax: +33 (0)4 74 97 67 20

STAMOÏD AG  
Eglisau - SWITZERLAND  
Tel: +41 (0)44 868 26 26  
Fax: +41 (0)44 868 27 27

#### EAST EUROPE

FERRARI RUSSIA  
Moscow - RUSSIA  
Tel: +7 495 933 65 72  
Fax: +7 495 933 65 81

#### NORTH AMERICA

FERRARI TEXTILES CORP.  
Florida - USA  
Tel: +1 954 942 3600  
Fax: +1 954 942 5555

#### LATIN AMERICA

FERRARI LATINOAMERICA S.A.  
Santiago - CHILE  
São Paulo - BRAZIL  
Tel/Fax: +56 2 264 1543

#### MIDDLE EAST

FERRARI DUBAI  
Dubai - U.A.E  
Tel: +971 4 886 5506  
Fax: +971 4 886 5507

#### ASIA - PACIFIC

FERRARI HONG-KONG LTD  
HONG-KONG  
Tel: +852 3622 1340  
Fax: +852 3622 1354

#### CHINA

FERRARI CHINA  
Shanghai  
Tel: +86 21 6211 6012  
Fax: +86 21 6211 6389